



# HORTUS BOTANICUS

Журнал Совета ботанических садов СНГ при МАН

Index Seminum

I

11 / 2016



Информационно-аналитический центр Совета ботанических садов России  
при Ботаническом саде Петрозаводского государственного университета

# **HORTUS BOTANICUS**

Журнал Совета ботанических садов СНГ при МААН

## **11.1 / 2016**

ISSN 1994-3849

Эл № ФС 77-33059 от 11.09.2008

---

### **Главный редактор**

А. А. Прохоров

### **Редакционный совет**

П. Вайс Джексон  
А. С. Демидов  
Т. С. Маммадов  
В. Н. Решетников  
Т. М. Черевченко

### **Редакционная коллегия**

Г. С. Антипина  
Е. М. Арнаутова  
А. В. Бобров  
Ю. К. Виноградова  
Е. В. Голосова  
Ю. Н. Карпун  
В. Я. Кузеванов  
Е. Ф. Марковская  
Ю. В. Наумцев  
Е. В. Спиридович  
А. И. Шмаков

### **Редакция**

К. А. Васильева  
А. В. Еглачева  
С. М. Кузьменкова  
А. Г. Марахтанов

---

### **Адрес редакции**

185910, Республика Карелия, г. Петрозаводск, ул. Красноармейская, 31, каб. 12.

E-mail: [hortbot@gmail.com](mailto:hortbot@gmail.com)

<http://hb.karelia.ru>

© 2001 - 2016 А. А. Прохоров

### **На обложке:**

Seed owl, handmade by Dr. Barbara Oberwinkler

### **Разработка и техническая поддержка**

Отдел объединенной редакции научных журналов ПетрГУ, РЦ НИТ ПетрГУ,  
Ботанический сад ПетрГУ

Петрозаводск

2016

## Index Seminum

## Index Seminum 2016. Botanic Garden of Petrozavodsk State University

**ПЛАТОНОВА**  
**Елена Анатольевна** *Петрозаводский государственный университет, meles@sampo.ru*

**ЕГЛАЧЕВА**  
**Арина Вячеславовна** *Петрозаводский государственный университет, arinev@mail.ru*

**ТИМОХИНА**  
**Татьяна Алексеевна** *Петрозаводский государственный университет (Ботанический сад), garden@petsu.karelia.ru*

**Ключевые слова:**

in situ, ex situ, Index seminum, список семян, генетические ресурсы

**Аннотация:**

Список семян дикорастущих и культивируемых растений, собранных в 2016 году в Ботаническом саду ПетрГУ.

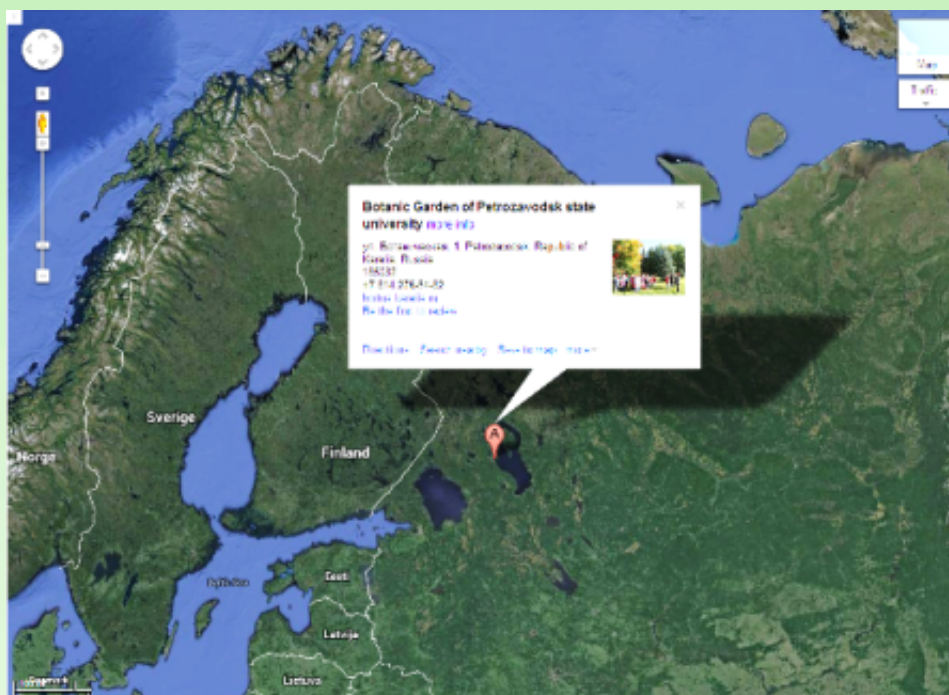
Получена: 11 декабря 2016 года

Подписана к печати: 23 декабря 2016 года

\*

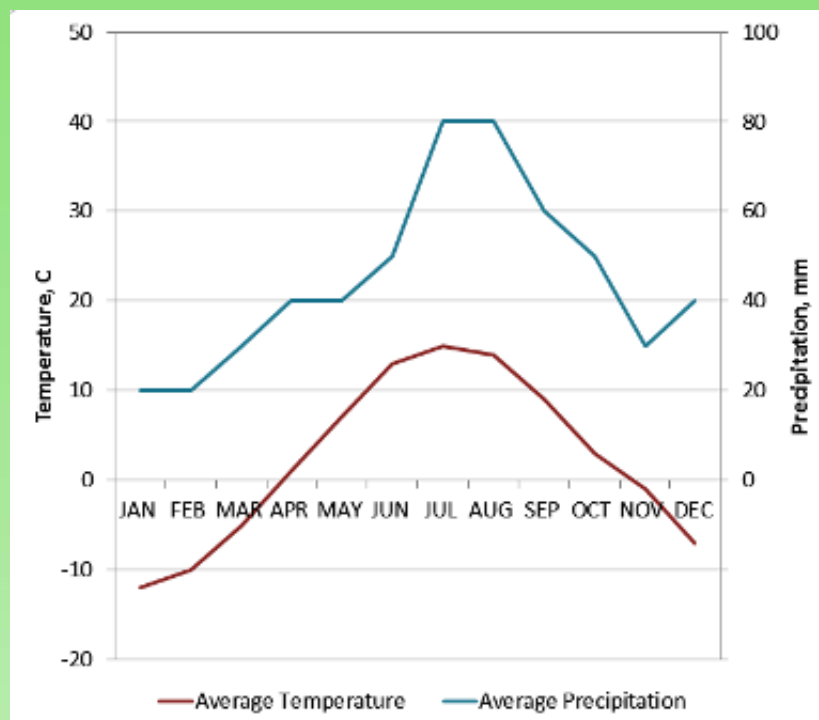
Index Seminum (Seed List) of botanical garden is proof of the success of ex situ cultivation of plants. It is an essential tool for the dissemination of genetic resources, has the unique ability to adapt. Accordingly, Index Seminum is the most important publication of the botanical garden - its contribution to the conservation and the formation of biological diversity of useful plants.

In 1951 the [Botanic Garden of Petrozavodsk State University](#) were founded amidst coniferous forests on the southern slopes of the surviving volcano on the northern bank of the Petrozavodsk bay of the Onega lake.

**Geographical data:**

Longitude: 34° 24 " East; Latitude: 61 ° 50 " North; altitude about sea level: 34 - 122 m

**Climate:**



Hardiness zone - 4

**Seeds:**

The seeds from the garden have had open pollination, hybridization is therefore possible.

Seeds were collected in 2015-2016 by E. Platonova, A. Eglacheva, T. Timohina.

W – seeds collected from natural habitats.

\* – seeds were collected in 2015.

\*\*\*

ADOXACEAE	
1	<i>Viburnum lantana</i> L.
2	<i>Viburnum opulus</i> L. [W]
3	<i>Viburnum sargentii</i> Koehne
ALISMATACEAE	
4	<i>Sagittaria sagittifolia</i> L. [W]*
ASPARAGACEAE	
5	<i>Convallaria majalis</i> L. [W]
6	<i>Convallaria majalis</i> L.*
7	<i>Maianthemum bifolium</i> (L.) F.W.Schmidt [W]
ASTERACEAE	
8	<i>Achillea alpina</i> L.*
9	<i>Arnica rydbergii</i> Greene
10	<i>Centaurea jacea</i> L. [W]*

11	<i>Centaurea montana</i> L.*
12	<i>Centaurea scabiosa</i> L. [W]*
13	<i>Eupatorium cannabinum</i> L.
14	<i>Gnaphalium sylvaticum</i> L. [W]
15	<i>Hieracium aurantiacum</i> L.*
16	<i>Hieracium penduliforme</i> (Dahlst.) Johanss. [W]
17	<i>Hieracium pilosella</i> L. [W]
18	<i>Hieracium umbellatum</i> L. [W]
19	<i>Kalimeris incisa</i> (Fisch.) DC.
20	<i>Leucanthemum vulgare</i> (Vaill.) Lam. [W]
21	<i>Ligularia sibirica</i> (L.) Cass.
22	<i>Pyrethrum corymbosum</i> (L.) Scop.
23	<i>Schlagintweitia intybacea</i> (All.) Griseb.
24	<i>Solidago virgaurea</i> L. [W]*
ASPLENIACEAE	
25	<i>Asplenium trichomanes</i> L. [W]
ATHYRIACEAE	
26	<i>Athyrium filix-femina</i> (L.) Roth [W]
BERBERIDACEAE	
27	<i>Berberis vulgaris</i> L.
BETULACEAE	
28	<i>Alnus glutinosa</i> (L.) Gaertn. [W]
29	<i>Betula pendula</i> var. <i>carelica</i> (Merckl.) Hämet-Ahti
CAMPANULACEAE	
30	<i>Campanula latifolia</i> L. [W]*
31	<i>Campanula persicifolia</i> L. [W]
32	<i>Campanula patula</i> L. [W]
33	<i>Jasione montana</i> L.
CAPRIFOLIACEAE	
34	<i>Lonicera alpigena</i> L.
35	<i>Lonicera tatarica</i> L.*
36	<i>Lonicera xylosteum</i> L. [W]
37	<i>Symphoricarpos albus</i> (L.) S.F.Blake
38	<i>Scabiosa ochroleuca</i> L.
CARYOPHYLLACEAE	
39	<i>Dianthus deltoides</i> L.
40	<i>Dianthus fragrans</i> M.Bieb.
41	<i>Dianthus giganteus</i> subsp. <i>banaticus</i> (Heuff.) Tutin
42	<i>Dianthus hyssopifolius</i> subsp. <i>gallicus</i> (Pers.) M.Lainz & Munoz Garm
43	<i>Dianthus petraeus</i> Waldst. & Kit.
44	<i>Dianthus pyrenaicus</i> Pourr.
45	<i>Silene chalcedonica</i> (L.) E.H.L.Krause
46	<i>Silene dioica</i> (L.) Clairv. [W]
47	<i>Silene flos-cuculi</i> (L.) Greuter & Burdet [W]
48	<i>Silene suecica</i> (Lodd.) Greuter & Burdet*
49	<i>Silene viscaria</i> (L.) Jess. [W] *

50	<i>Silene viscaria</i> 'Splendens'
	CELASTRACEAE
51	<i>Euonymus europaeus</i> L.
	CISTACEAE
52	<i>Helianthemum nummularium</i> (L.) Mill.
	CRASSULACEAE
53	<i>Sedum kamschaticum</i> Fisch.
54	<i>Sedum rupestre</i> L.
	CUPRESSACEAE
55	<i>Juniperus communis</i> L.
56	<i>Microbiota decussata</i> Kom.
57	<i>Thuja occidentalis</i> 'Aureospicata'
58	<i>Thuja occidentalis</i> 'Malonyana'
59	<i>Thuja occidentalis</i> 'Rosenthalii'
60	<i>Thuja occidentalis</i> 'Semperaurea'
	CYPERACEAE
61	<i>Carex muricata</i> L.
	CYSTOPTERIDACEAE
62	<i>Gymnocarpium dryopteris</i> (L.) Newman [W]
	DRYOPTERIDACEAE
63	<i>Dryopteris carthusiana</i> (Vill.) H.P. Fuchs [W]
64	<i>Dryopteris filix-mas</i> (L.) Schott [W]
	ELAEAGNACEAE
65	<i>Elaeagnus commutata</i> Bernh. ex Rydb.*
	ERICACEAE
66	<i>Empetrum nigrum</i> L. [W]
67	<i>Orthilia secunda</i> (L.) House [W]
68	<i>Pyrola media</i> Sw. [W]
69	<i>Rhododendron metternichii</i> Siebold & Zucc.
70	<i>Vaccinium uliginosum</i> L. [W]
71	<i>Vaccinium vitis-idaea</i> L. [W]
	FABACEAE
72	<i>Caragana arborescens</i> Lam.
73	<i>Caragana frutex</i> (L.) K.Koch
74	<i>Lathyrus vernus</i> (L.) Bernh. [W]
75	<i>Lathyrus sylvestris</i> L.
	GERANIACEAE
76	<i>Geranium pyrenaicum</i> Burm.f.
77	<i>Geranium sanguineum</i> L.
78	<i>Geranium sylvaticum</i> L. [W]
79	<i>Geranium thunbergii</i> Siebold ex Lindl. & Paxton
	GROSSULARIACEAE
80	<i>Ribes alpinum</i> L.
	HYDRANGEACEAE
81	<i>Hydrangea xanthoneura</i> Diels
	HYPERICACEAE
82	<i>Hypericum maculatum</i> Crantz [W]*

IRIDACEAE	
83	<i>Iris halophila</i> Pall.
84	<i>Iris halophila</i> var. <i>sogdiana</i> (Bunge) Grubov
85	<i>Iris pseudacorus</i> L.
86	<i>Iris ruthenica</i> Ker Gawl.
87	<i>Iris sanguinea</i> Donn ex Hornem.
88	<i>Iris setosa</i> Pall. ex Link*
89	<i>Iris sibirica</i> L.
90	<i>Iris sibirica</i> f. <i>albiflora</i>
91	<i>Iris versicolor</i> L.*
JUGLANDACEAE	
92	<i>Juglans mandshurica</i> Maxim.
JUNACEAE	
93	<i>Luzula nivea</i> (Nath.) DC.
LAMIACEAE	
94	<i>Clinopodium vulgare</i> L. [W]*
95	<i>Monarda</i> 'Cambridge Scarlet'
96	<i>Nepeta racemosa</i> Lam.
97	<i>Origanum vulgare</i> L. [W]
98	<i>Origanum vulgare</i> L.
99	<i>Physostegia virginiana</i> (L.) Benth.
100	<i>Salvia transsylvanica</i> (Schur ex Griseb. & Schenk) Schur
101	<i>Stachys byzantina</i> K.Koch
102	<i>Stachys macrantha</i> (K.Koch) Stearn
103	<i>Stachys officinalis</i> (L.) Trevis.
104	<i>Stachys palustris</i> L. [W]*
MALVACEAE	
105	<i>Tilia platyphyllos</i> Scop.
MELANTHIACEAE	
106	<i>Paris quadrifolia</i> L. [W]
MENYANTHACEAE	
107	<i>Menyanthes trifoliata</i> L. [W]
NYMPHAEACEAE	
108	<i>Nuphar lutea</i> (L.) Sm. [W]*
OLEACEAE	
109	<i>Forsythia ovata</i> Nakai
ONOCLEACEAE	
110	<i>Matteuccia struthiopteris</i> (L.) Tod. [W]
PAEONIACEAE	
111	<i>Paeonia anomala</i> L.
112	<i>Paeonia peregrina</i> Mill.
PHYTOLACCACEAE	
113	<i>Phytolacca esculenta</i> Van Houtte
PINACEAE	
114	<i>Abies concolor</i> (Gordon) Lindl. ex Hildebr.
115	<i>Abies sibirica</i> Ledeb.
116	<i>Larix × polonica</i> Racib.

117	<i>Larix archangelica</i> C.Lawson
118	<i>Larix czekanowskii</i> Szafer
119	<i>Larix decidua</i> Mill.
120	<i>Larix kaempferi</i> (Lamb.) Carrière
121	<i>Picea abies</i> (L.) H.Karst.
122	<i>Picea fennica</i> (Regel) Kom. [W]
123	<i>Picea glauca</i> (Moench) Voss*
124	<i>Pinus pumila</i> (Pall.) Regel
125	<i>Pinus sibirica</i> Du Tour
126	<i>Pinus strobus</i> L.
127	<i>Pseudotsuga menziesii</i> (Mirb.) Franco
PLANTAGINACEAE	
128	<i>Digitalis ciliata</i> Trautv.
129	<i>Digitalis lutea</i> L.
130	<i>Penstemon hirsutus</i> (L.) Willd.
131	<i>Penstemon lyallii</i> A. Gray
132	<i>Plantago lanceolata</i> L. [W]
133	<i>Veronica gentianoides</i> Vahl
134	<i>Veronica spicata</i> L. [W]
135	<i>Veronicastrum sibiricum</i> (L.) Pennell
POLYGONACEAE	
136	<i>Persicaria bistorta</i> (L.) Samp. [W]
137	<i>Rumex acetosa</i> L. [W]*
POLYPODIACEAE	
138	<i>Polypodium vulgare</i> L. [W]
PRIMULACEAE	
139	<i>Lysimachia punctata</i> L.
140	<i>Lysimachia vulgaris</i> L. [W]*
141	<i>Primula veris</i> L.
RANUNCULACEAE	
142	<i>Actaea spicata</i> L. *
143	<i>Aquilegia einseleana</i> F.W.Schultz
144	<i>Caltha palustris</i> L. [W]*
145	<i>Clematis recta</i> L.
146	<i>Ranunculus montanus</i> Willd.
147	<i>Thalictrum aquilegiifolium</i> L.*
148	<i>Thalictrum lucidum</i> L.
149	<i>Thalictrum minus</i> L.
150	<i>Thalictrum simplex</i> L.
151	<i>Trollius europaeus</i> L. [W]
152	<i>Trollius asiaticus</i> L.
153	<i>Trollius chinensis</i> Bunge
154	<i>Trollius hondoensis</i> Nakai
RHAMNACEAE	
155	<i>Frangula alnus</i> Mill.
156	<i>Rhamnus cathartica</i> L.
ROSACEAE	



157	<i>Agrimonia eupatoria</i> L.
158	<i>Alchemilla mollis</i> (Buser) Rothm.*
159	<i>Chaenomeles maulei</i> (Mast.) C.K.Schneid.
160	<i>Cotoneaster lucidus</i> Schltldl.
161	<i>Cotoneaster nebrodensis</i> Koch
162	<i>Crataegus punctata</i> Jacq.
163	<i>Crataegus sanguinea</i> Pall.
164	<i>Crataegus submollis</i> Sarg.
165	<i>Drymocallis rupestris</i> (L.) Soj k
166	<i>Filipendula ulmaria</i> (L.) Maxim. [W]
167	<i>Padus pensylvanica</i> (L.f.) S.Ya.Sokolov
168	<i>Physocarpus opulifolius</i> (L.) Maxim.
169	<i>Physocarpus opulifolius</i> 'Diabolo'
170	<i>Potentilla argrophylla</i> 'Zolotysto-oranjevaya'
171	<i>Potentilla crantzii</i> (Crantz) Beck ex Fritsc*
172	<i>Potentilla drummondii</i> subsp. <i>breweri</i> (S.Watson) Ertter
173	<i>Potentilla</i> 'Flambeau'
174	<i>Potentilla</i> × <i>hopwoodiana</i> Sweet
175	<i>Potentilla nepalensis</i> Hook.*
176	<i>Potentilla nivea</i> L.
177	<i>Potentilla thurberi</i> 'Monarch's Velvet'
178	<i>Rosa majalis</i> Herrm. [W]
179	<i>Rosa nutkana</i> C.Presl
180	<i>Rosa rugosa</i> Thunb.
181	<i>Rosa spinosissima</i> L.
182	<i>Sanguisorba canadensis</i> L.*
183	<i>Sanguisorba minor</i> Scop.*
184	<i>Sibbaldia procumbens</i> L.
185	<i>Sorbaria sorbifolia</i> (L.) A.Braun
186	<i>Sorbus aucuparia</i> L.
	RUBIACEAE
187	<i>Galium boreale</i> L. [W]*
188	<i>Galium odoratum</i> (L.) Scop.
	RUTACEAE
189	<i>Ptelea trifoliata</i> L.
	SAPINDACEAE
190	<i>Acer tataricum</i> subsp. <i>ginnala</i> (Maxim.) Wesm.
	SAXIFRAGACEAE
191	<i>Heuchera cylindrica</i> Douglas
192	<i>Heuchera sanguinea</i> Engelm.
193	<i>Mitella diphylla</i> L.
194	<i>Rodgersia podophylla</i> A.Gray
195	<i>Saxifraga cotyledon</i> L.
196	<i>Saxifraga exarata</i> subsp. <i>moschata</i> (Wulfen) Cavill.
	SCROPHULARIACEAE
197	<i>Scrophularia nodosa</i> L. [W]

<i>SOLANACEAE</i>	
198	<i>Solanum dulcamara</i> L.*
<i>TAXACEAE</i>	
199	<i>Taxus canadensis</i> Marshall
200	<i>Taxus x media</i> 'Hicksii'
<i>THELYPTERIDACEAE</i>	
201	<i>Phegopteris connectilis</i> (Michx.) Watt [W]
<i>VIOLACEAE</i>	
202	<i>Viola labradorica</i> Schrank
<i>XANTHORRHOEACEAE</i>	
203	<i>Hemerocallis citrina</i> Baroni
204	<i>Hemerocallis lilioasphodelus</i> L.*
205	<i>Hemerocallis middendorffii</i> Trautv. & C.A.Mey. *
<i>VITACEAE</i>	
206	<i>Parthenocissus quinquefolia</i> (L.) Planch.
<i>WOODSIACEAE</i>	
207	<i>Woodsia ilvensis</i> (L.) R. Br. [W]



*Persicaria bistorta* (L.) Samp.



*Campanula persicifolia* L.



*Menyanthes trifoliata* L.

**Seed request:****Agreement on the supply of plant material by the Botanic Garden of Petrozavodsk State University (BGPSU)**

Since the Convention on Biological Diversity (CBD, Rio de Janeiro 1992) entered into force, it has become necessary for botanic gardens to comply in particular with Article 15 (Access to genetic resources), especially in connection with the exchange of plant material. Accordingly, the BGPSU only passes on plant material under the condition that the user acts in the spirit of the Convention on Biological Diversity. The BGPSU is dedicated to the conservation, sustainable use and research of biological diversity. With regard to the acquisition, maintenance and supply of plant material, the BGPSU therefore expects its partners to act in a manner that is consistent to the letter and the spirit of the Biodiversity Convention, the Convention on International Trade in Endangered Species (CITES) and in compliance with all relevant conventions and laws relating to the protection of biological diversity. As a consequence, plant material from the collections of the BGPSU are supplied only to those persons and institutions who accept the following conditions:

1. On the basis of this agreement, the material is intended to serve the common good, particularly scientific study, education and the interests of environmental protection.

2. The recipient is obliged to document and preserve information relating to the material appropriately.

3. In the event that scientific publications on the plant material provided are produced, the origin of the material is to be cited. In addition, copies of such publications are expected to be sent to the BGPSU without request.

4. Commercial use is not covered by this agreement but is object of a separate agreement with the country of origin. Such agreement underlies the provisions of the CBD, i. e. the user is obliged to share benefits with the country of origin. In this context, the user has to forward all relevant information to the authorities instructed with the implementation of the CBD. On request, the BGPSU will provide such information to these authorities.

5. The recipient is allowed to supply plant material derived from the BGPSU to others only on the basis and under the conditions of this or corresponding agreements.

By ordering plant material from the BGPSU, the recipient accepts the conditions listed above

\_\_\_\_\_  
**Sign and Stamp of seeds recipient  
(if it outside of Russia, Belarus, Kazhstan)**

**DESIDERATA**


PLEASE SEND THE DESIDERATA TO

[GARDEN@PSU.KARELIA.RU](mailto:GARDEN@PSU.KARELIA.RU)

TILL APRIL 15, 2017

YOUR ADDRESS:

Address: Seed curator: Tatiana Timohina, Botanic Garden of Petrozavodsk State University, Lenina av., 33, Petrozavodsk, Karelia, Russia, 185910

Адрес: Тимохиной Т. А., Ботанический сад ПетрГУ, пр. Ленина, 33, Петрозаводск, Карелия, 185910

**References**

The Plant List (2013). Version 1.1. Published on the Internet; <http://www.theplantlist.org/> (accessed 1st January). <http://www.theplantlist.org/> (дата обращения 10.12.2016).

## Index Seminum 2016. Botanic Garden of Petrozavodsk State University

**PLATONOVA**  
Elena

*PetrSU, meles@sampo.ru*

**EGLACHEVA**  
Arina

*PetrSU, arinev@mail.ru*

**TIMOKHINA**  
Tatiana

*PetrSU, garden@petrsu.karelia.ru*

**Keywords:**

in situ, ex situ, Index seminum, seed list, genetic resources

**Annotation:**

Seed list of wild and cultivated plants collected in 2016 in the Botanic Garden of Petrozavodsk State University.

Petrozavodsk State University // Hortus bot. 2016. Т. 11, прил. I, URL:

<http://hb.karelia.ru/journal/article.php?id=3822>. DOI: 10.15393/j4.art.2016.3822

Cited as: Platonova E., Eglacheva A., Timokhina T. "Index Seminum 2016. Botanic Garden of Petrozavodsk State University" // Hortus bot. 11, suppl. I, (2016): DOI: 10.15393/j4.art.2016.3822